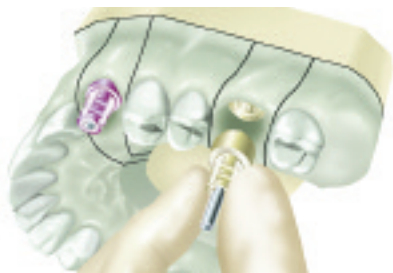
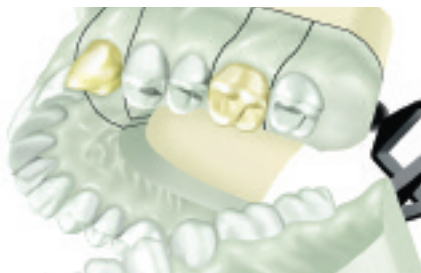


# Hex-Lock™ Plastic Temporary Abutment Restorative Guide



**1.** Pour working cast in dental stone. Use soft tissue material to represent gingival contours if desired. Remove transfers from the cast.



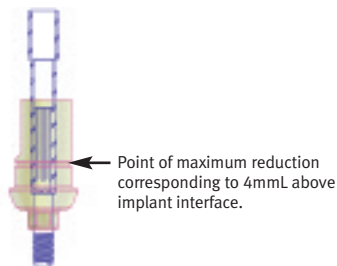
**2.** Pour the opposing arch impression in dental stone, then utilize the interocclusal records to articulate the casts. Create a diagnostic wax-up of the teeth to be replaced. Duplicate the cast and fabricate a clear acrylic (vacuform) shell.



**3.** Remove the diagnostic wax pattern and steam clean the working cast. Trim and re-seat the clear vacuform. Drill a small hole in the vacuform to allow the abutment screw of the proposed screw-retained provisional crown to protrude through.



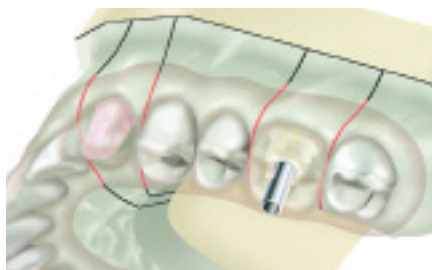
**4.** Attach the corresponding Plastic Temporary Abutments to the Implant Analogs. Use a 1.25mmD Hex Tool to tighten the abutment screw, using finger-pressure only.



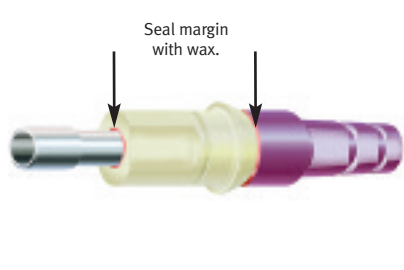
**5.** Mark the required modifications on the abutment to allow for appropriate occlusal clearance, gingival contouring and prosthesis design for adequate thickness of veneering material.



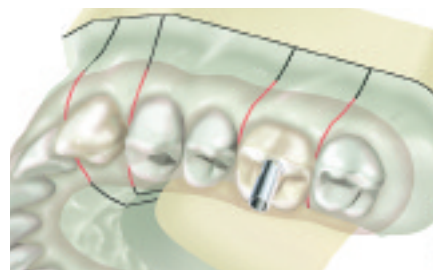
**6.** Trim the Plastic Temporary Abutments. Note: Cement-retained restorations (canine) require additional preparation as a separate crown will be cemented onto the abutment.



**7.** Block out undercuts and apply separating medium to the cast. Cover the abutment for the cemented provisional with wax to prevent adherence of temporary material.



**8.** To avoid ingress of excess processing liquid (monomer) in the indicated areas, seal the void around the screw as it enters the screw access channel. Seal the junction of the abutment to the analog in a similar fashion. Do not apply monomer directly to the abutment.



**9.** Selectively fill the vacuform with temporary material and place over the trimmed abutments, allowing the screw to pass through the vacuform. Follow manufacturer's guidelines to cure temporary material.



**10.** Follow standard laboratory procedures to complete both the cement- and screw-retained provisional prostheses. Trim the abutment screws accordingly.



**11. a)** Canine: Tighten abutment screw, block out screw access hole and cement provisional.  
**b)** Molar: Attach the one-piece abutment/provisional to implant, tighten abutment screw and block out screw access hole.



**12.** Completed provisional restorations are in place.

**Note:** This guide is for educational use only.

Refer to Zimmer Dental Prosthetics Instructions for Use (part #4894) for complete instructions for use.

# Hex-Lock Plastic Temporary Abutment



Qty.	Hex-Lock Plastic Temporary Abutments	
	Platform Diameter	Emergence Profile
	HLPT3	3.5mm 4.5mm
	HLPT4	4.5mm 5.5mm
	HLPT5	5.7mm 6.5mm



Qty.	Tools	
	Description	
	HX1.25	Hex Tool, 1.25mmD, 17mmL
	HXL1.25	HexTool, 1.25mmD, 22mmL
	THX1.25	Tapered Frictional Hex Tool, 1.25mmD, 23mmL
	THXL1.25	Tapered Frictional Hex Tool, 1.25mmD, 27mmL

Qty.	Other



Qty.	Implant Analogs	
	Platform Diameter	
	IA3	3.5mm
	IA4	4.5mm
	IA5	5.7mm

- Create a natural emergence profile during tissue healing with simple and esthetic provisional restorations.
- Cement a restoration onto the abutment with temporary cement, or bond autopolymerizing acrylic directly to the abutment.
- A tooth-colored shade enhances esthetics, ideal for anterior restorations.
- Packaged with an easily prepared Retaining Screw that is useful for maintaining the screw access channel.
- The abutment can be used for up to 28 days.



For a complete list of products and tooling, please refer to the current product catalog.

**For questions or to fax orders:**  
**In the U.S.** 800 854 7019  
 Fax 888 225 2483  
**Outside the U.S.** +1 760 929 4300  
 Fax +1 760 431 7811  
**Australia** +61 (0)2 9950 5444  
 Fax +61 2 429 74190  
**Canada** +1 905 567 2073  
 or 1 800 265 0968  
 Fax +1 905 567 2076  
**France** +33 (0)1 45 12 35 35  
 Fax +33 (0)1 45 60 04 88  
**Germany** +49 (0)761 4584 722 / 723  
 Fax +49 (0)761 4584 729  
**Israel** +972 (0)3 6124242  
 Fax +972 (0)3 6124243  
**Spain** +34 93 846 05 43  
 Fax +34 93 845 43 25

Customer Account \_\_\_\_\_  
**Ship To:** Dr. Name \_\_\_\_\_  
 Phone (\_\_\_\_) \_\_\_\_\_  
 Address \_\_\_\_\_  
 \_\_\_\_\_  
 City \_\_\_\_\_  
 State \_\_\_\_\_ Zip \_\_\_\_\_  
 Order Date \_\_\_\_\_  
 Ordered By \_\_\_\_\_

**Ship Via Federal Express**  
 2-Day  Overnight (5:30 pm)  P1 (10:30 am)  
**Must Arrive By** \_\_\_\_\_  
**Payment Options**  
 Invoice  COD  
 Visa  Mastercard  AmEx  
 Credit Card # \_\_\_\_\_  
 Exp. Date \_\_\_\_\_  
 Signature \_\_\_\_\_

[www.zimmerdental.com](http://www.zimmerdental.com)

